



Pro Logic Computers (UK) Ltd

Introduction

This document is to explain how to setup local printer (ie Home Printer) on a remote computer (ie Office Computer) while using Remote Desktop Connection. So you can print your Office Documents at Home for example. In most cases the printer will automatically install when you connect. However this is only the case if the remote computer has the drivers for your local printer, Step 2 maybe get around this...

Prerequisites

Before we begin you will need;

- VPN Connection (if required)
- Remote Desktop Connection

Date First Published : 29/03/13

Created By : Paul Fox

Version : 1.1

Lasted Updated : 06/07/13

Technical Level : Mid-High

Version History

1.0 – First Published Version. (PF)

1.1 – Added Version History

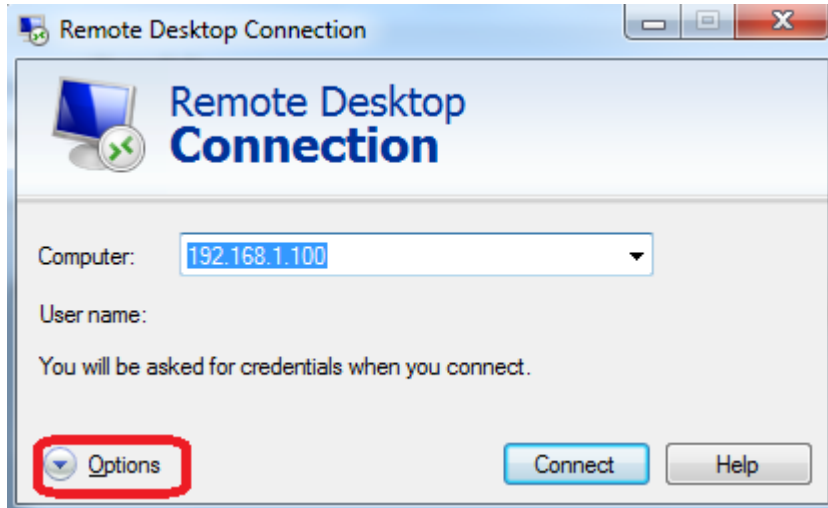
Disclaimers & Acknowledgements

E&OE. Copying of this document, or text & images associated with it, is strictly prohibited. Imagery taken from Microsoft software is solely used for advice and training, Microsoft and Windows are either registered trademarks or trademarks of Microsoft Corporation in the United States and/or other countries. Pro Logic Computers (UK) Ltd or its agents accept no responsibility for the content of this document or results from actions taken by it. This document is provided as is, with no warranty or liability.

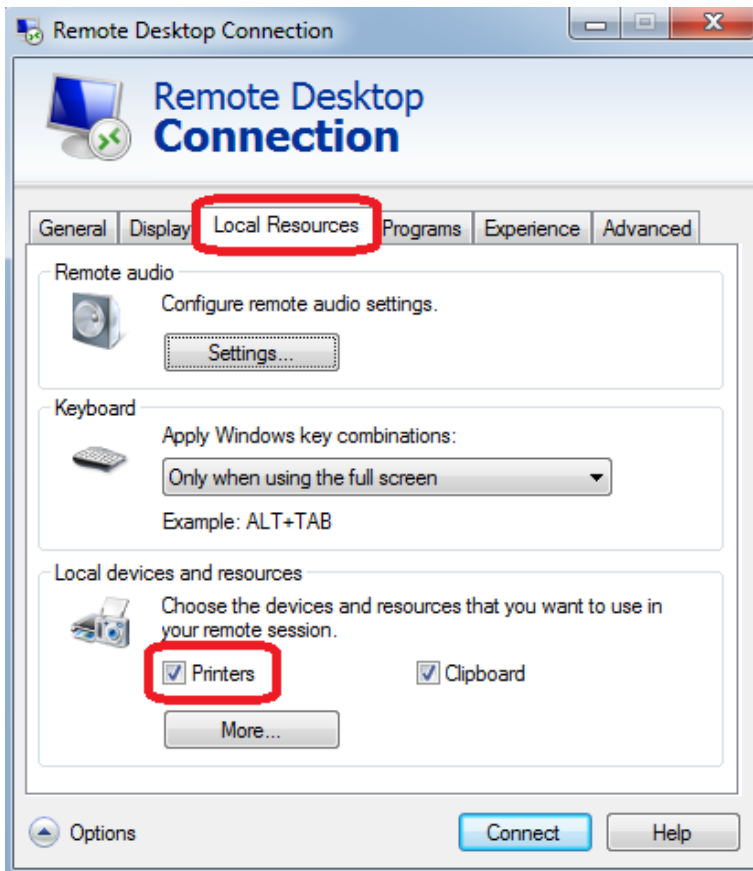


Installing your Local Printer on Remote Desktop Computer

Step 1. First we must enable the feature....



Open your **Remote Desktop Connection** and Click **Options**.



Click **Local Resources** and make sure there is a tick in **Printers**.

If you use a short cut icon for this Remote Desktop Connection, we would advise clicking General and then Save.

Connect to your VPN (if required) then press **Connect** on the Remote Desktop Connection.

Within a minute you should see your local printers appear in Control Panel / Printers of the Remote Computer.



If not **Log Off** (do not disconnect) the Remote Desktop and try again...

If still not proceed to Step 2...

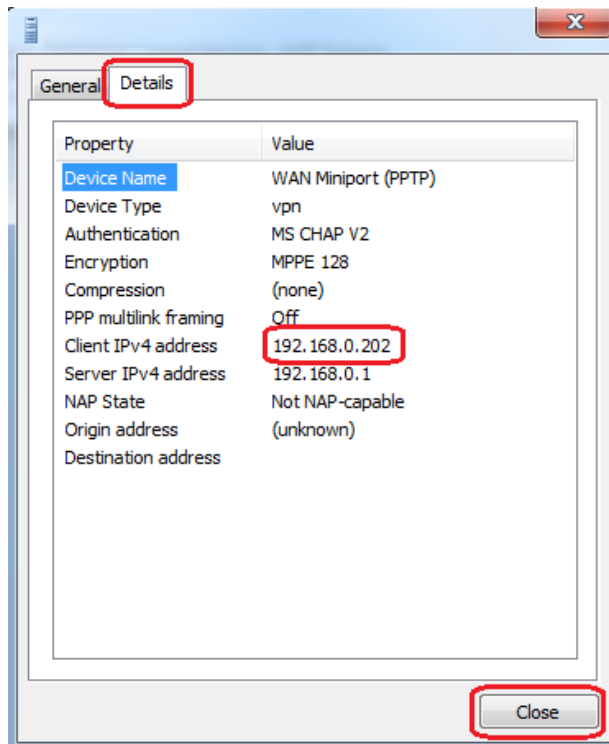


Step 2. IP address of your Local Computer's connection to the Network.



We just need to do a little bit of work on the Local PC so for the time being minimise the remote Desktop Connection. Move the mouse to the top of the screen and click the minimise button.

2.1 If you are connected via a VPN and Not Over a Local Network... *(if not skip to 2.2)*



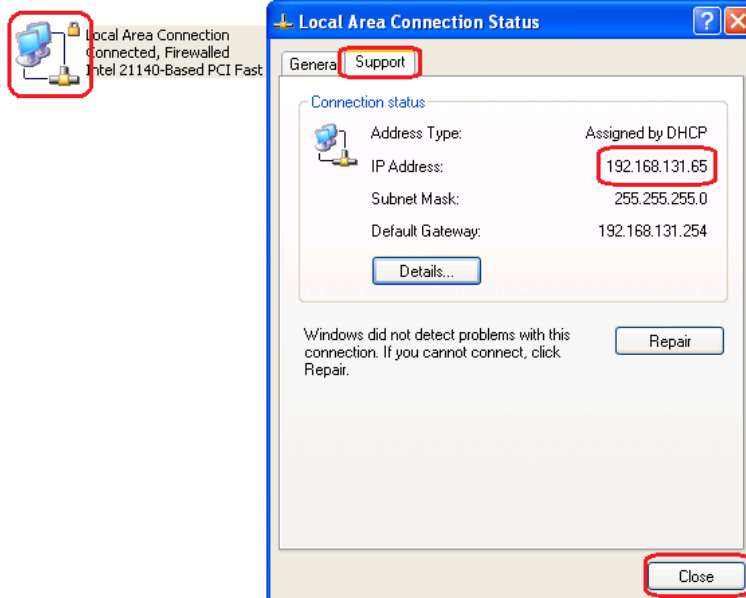
Double Click your VPN Connection Icon (ie OfficeVPN). Click **Details**, make a note of the **Client IPv4 address** then click **Close**.



2.2 If you are using Remote Desktop over a Local Network and not a VPN...

2.2.1 Under Window XP (skip to 2.2.2 for Vista / 7)

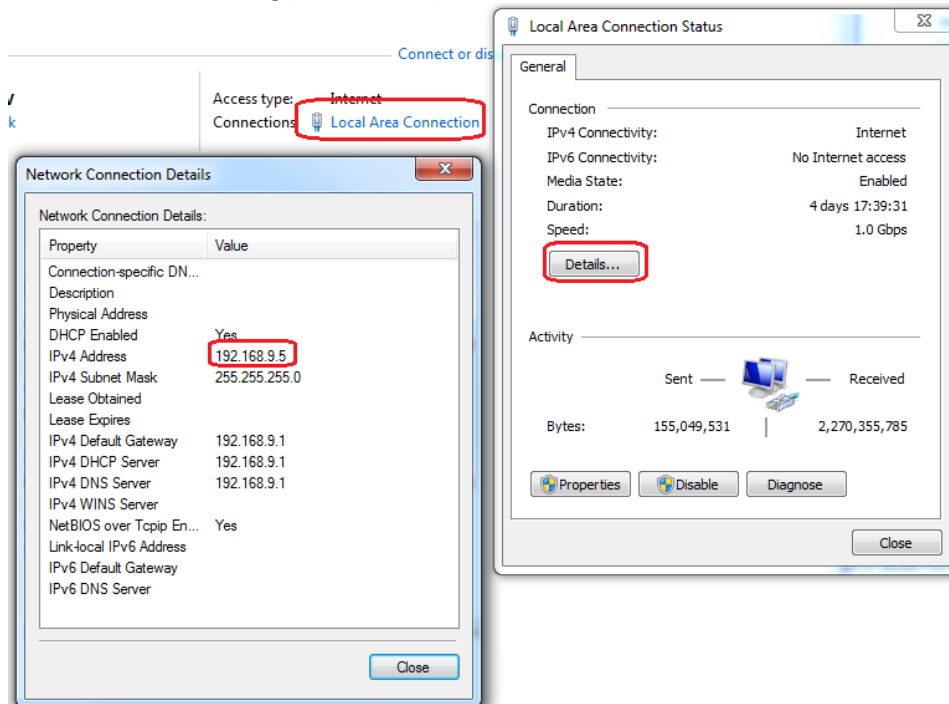
Click Start, Control Panel, Network Connections, Network Connections.



Double Click **Local Area Connection**, Click **Support**, make a note of the **IP Address** and then click **Close**.

2.2.2 Under Windows Vista / 7

Click the Windows Flag (bottom left), Control Panel, View Network Status & Tasks.



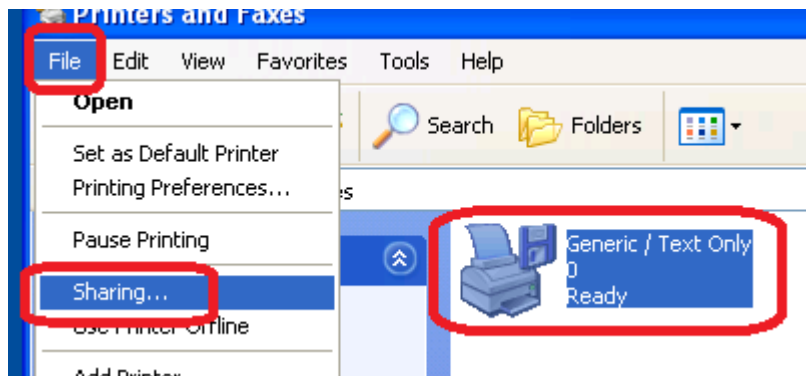
Click **Local Area Connection**, **Details...**, Make a note of the **IPv4 Address**, then Click **Close**.



Step 3. Share your local printer....

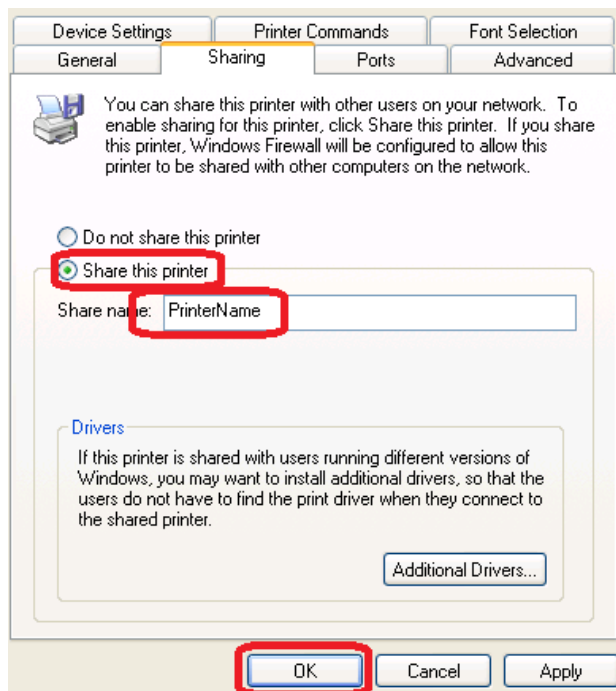
3.1.1 Sharing your Printer – Windows XP. (for Windows Vista / 7 skip to 3.1.2)

Click **Start** then **Printer and Faxes**.



Highlight the printer you wish to eventually use by clicking it. Click on **File** then **Sharing...**

*If you see "If you understand the security risks but want to share printers with out running the wizard, click here" – Click the **Click Here**. Then select **Just Enable Printer Sharing**.*

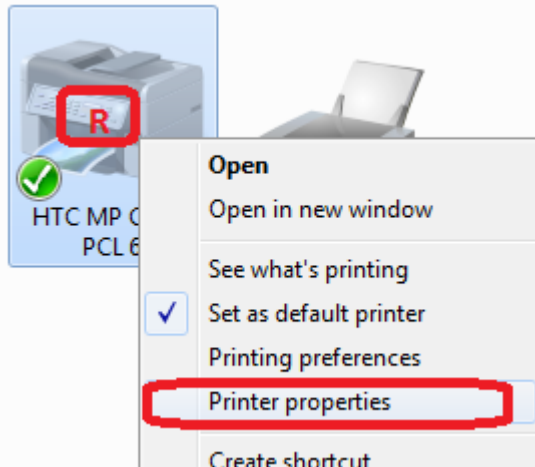


Select **Share this printer**, type in a **name for the printer** (ie HP5150), then click **OK**.

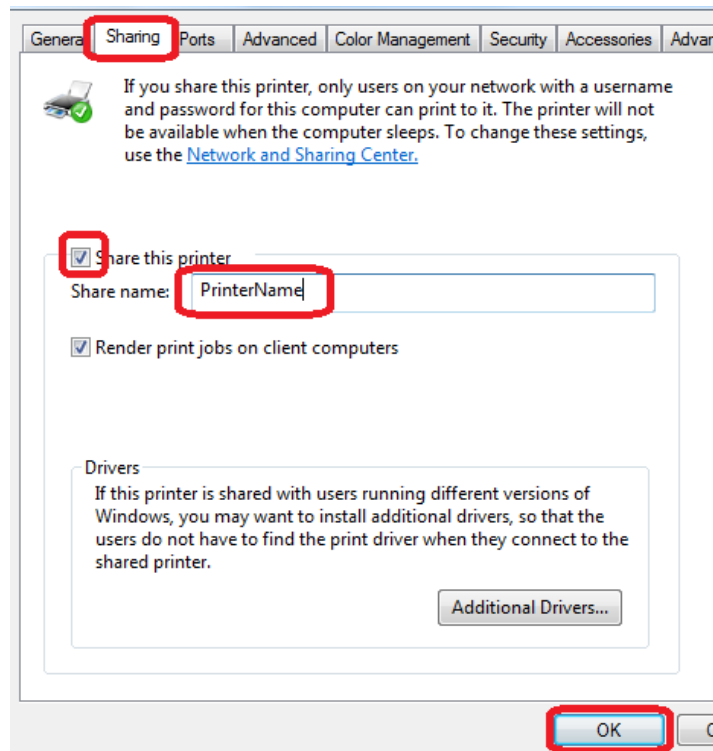


3.1.1 Sharing your Printer – Windows Vista / 7.

Click the **Windows Flag**, the **Devices and Printers**.



RIGHT Click on the printer you wish to eventually use and click **Printer Properties**.




Click on **Sharing** tab, Tick **Share this Printer**, type in a **share name** (ie HP5150) then click **OK**.

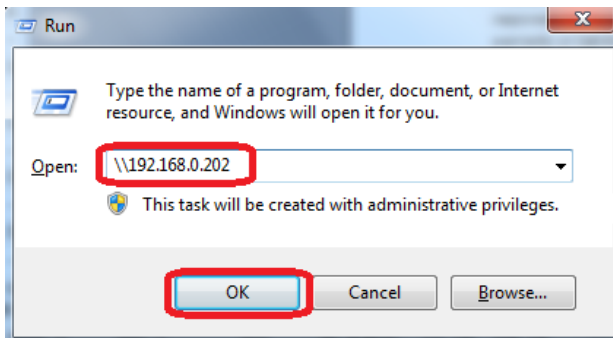


Step 4. Copy the drivers to the Remote Computer....

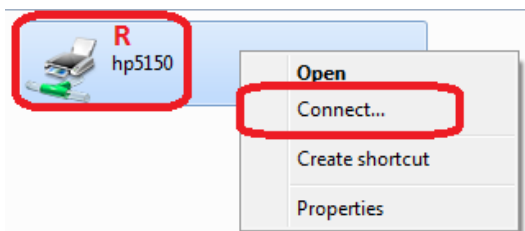
Open up your Remote Desktop Connection. If you minimised it earlier it should be running in your Taskbar, else open a new connection.

Open the Run Box...

- Windows XP – click **Start** and **Run...**
- Windows Vista / 7 – type in the search bar “run” without the quotes and click  **Run** .



In the Run box type in two **back slashes** followed by the **IP address** you noted in Step 2. Example “\\192.168.0.202” with out the quotes. Then click **ok**.



RIGHT click on your Local Printer and Click **Connect**. This will copy the drivers over to the remote computer.

If you get an error try temporally disabling your firewall on the Local Computer. Also please note this may not work if the Local Computer is a different operating system to the Remote.

You can now close this window.



Step 5. Tidy Up and End Bits...

Although the printer is now installed and will work (this time), Step 4 was just to get the driver over to the remote computer.

We must delete the newly installed printer because this may not work every time, when we use Remote Desktop Connection it will install it for us now the driver as been copied over.

ON THE REMOTE COMPUTER ONLY...

- Windows XP – Click **Start, Printers and Faxes**, locate the **new printer**, **RIGHT click** and select **Delete**.
- Windows Vista / 7 – Click the **Windows Flag**, click **Devices and Printers**, **RIGHT click** and Select **Remove Device**.

Now **Log off** your **Remote Desktop Connection**, by click **Start and Log Off**, do not close or Disconnect. The next session as to be a new one else the printer will not install.

Un-share your printer (optional)

- Windows XP - Click **Start** then **Printer and Faxes**, **Highlight** your printer again, click **File**, click **Sharing**, Select **Do not share this printer**.
- Windows Vista / 7 – Click the **Windows Flag**, the click **Devices and Printers**, **RIGHT Click** on the your printer again, click **Print Properties**, click **Sharing**, and select **Do not share this printer**.

Fingers Crossed - every time you reconnect to that Remote Desktop Computer the printer will automatically be available.

If you were unable to follow these instructions for when ever reason there are a few other options available...

- 1) *Install the driver on the Remote Computer using the drivers CD or Download, but in most cases you will need to plug in the printer. If not select LPT1 as the port then delete the printer afterwards.*
- 2) *Change the Driver on the Local Computer to a generic one that works with the printer (ie HP Lasterjet if an HP Laser)*